

## Swan Lake Wildlife Refuge Set To Open March 1st

<http://www.kttn.com/kgozfm/modules/news/article.php?storyid=111550>

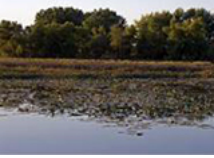
---

### **Swan Lake Wildlife Refuge Set To Open March 1st** **News**

Posted by : Randy

Posted on : 2014/2/24 9:57:55

Swan Lake National Wildlife Refuge, which is closed to the public during the winter, reopens the morning of March 1st at 6 o'clock.



The refuge, one mile south of Sumner, is managed by the US Fish and Wildlife Service as a unit of the National Wildlife Refuge System.

The refuge allows the public to fish, watch birds, and drive or walk through woods. Fishing is available in 2,000 acre Silver Lake. In addition to hiking throughout the refuge, there's a nature trail near the Visitor Center, with what's described as a nice overlook and scopes near Swan Lake Marsh.

The Visitor Center houses several exhibits and other information about the refuge. The Visitor Center is open to the public when staff is available, and often is staffed by volunteers. Refuge Manager, Steve Whitson, encouraged visitors to thank the volunteers for their service.